



Product Catalogue

Conduit Systems & Accessories

Welcome to Thomas & Betts

At Thomas & Betts, our focus is on improving your business performance by providing practical, reliable electrical products & services. To connect & protect for life. To solve everyday problems in the area's of Wire & Cable Management, Cable Protection, Power Connection & Control and Safety. Our extensive engineering, supply chain management and technical sales support teams are committed to understanding everything that impacts your ability to accomplish your business objectives by reducing your total cost of ownership.

Whether you are designing, installing, operating, maintaining or owning an office building, off-shore platform, hospital, or a high speed train, power generating plant, machine equipment or a manufacturing facility, Thomas & Betts engineered products fit and function in your application while providing superior performance, sustainability, and value throughout the project life cycle.

All our brands are built upon four product & service solution platforms. Platforms that address you or your customers' critical electrical & lighting needs covering the protection of data, energy, processes, assets and personal safety. Beyond hi-performance application characteristics, Thomas & Betts products, information and services facilitate and speed up your time critical assembly, installation or maintenance process.

With a dedicated team, we can support you with a full set of services and flagship product brands.

Thomas & Betts in EMEA:



EMERGI-LITE



furse



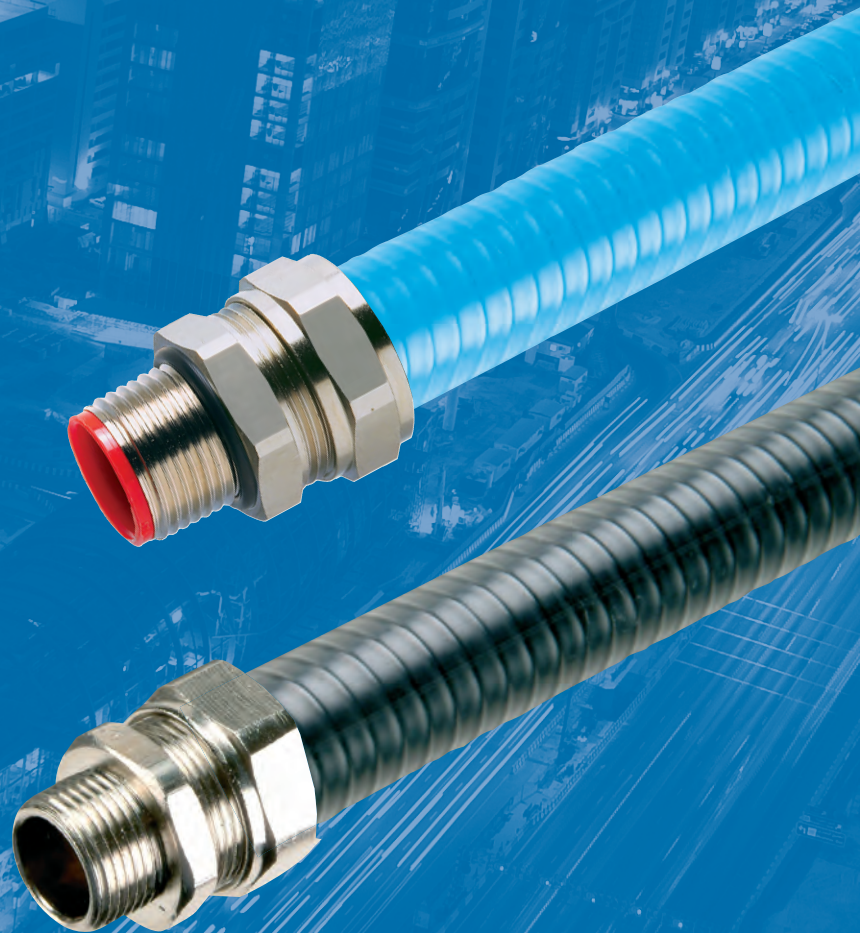
T&B Cable Tray



Ty-Rap

Contents

Conduit Selection Guide	4 - 5
Liquid Tight Flexible Metallic Conduit System	6 - 9
KE Ultra Flexible Metallic Conduit System	10 - 11
Stainless Steel Metallic Conduit System	12 - 13
Accessories	
Locknuts, Lockrings & Washers	14 - 15



Quick Selection Guide

Conduit Systems

	Product Section (Pages)	High Mechanical Strength	Oil and Chemical Resistant	Zero Halogen	Limited Fire Hazard
FLB	Liquid Tight (6 - 9)	✓	✓		
FLT		✓		✓	✓
FUB		✓	✓		
FLH		✓	✓	✓	
KEU	KE Ultra (10 - 11)	✓		✓	✓
KEBF		✓			
KEBT		✓		✓	✓
KSU	Stainless Steel (12 - 13)	✓	✓	✓	✓
FSH		✓	✓	✓	
FST		✓		✓	✓

For technical information please visit www.kopex.co.uk

Flame Retardant according to BSEN 61386	Abrasion Resistant	Static Temp. Rating °C	IP40	IP54	IP65	IP66	IP67	IP68	Approvals
✓		-25°C to +105°C				✓	✓	✓	BSEN 61386
✓		-25°C to +90°C				✓	✓	✓	BSEN 61386
✓		-25°C to +105°C				✓	✓		UL/CSA
✓		-50°C to +130°C				✓	✓	✓	BSEN 61386
✓		-50°C to +300°C	✓						BSEN 61386
✓		-25°C to +70°C		✓	✓				BSEN 61386
✓		-25°C to +90°C		✓	✓				BSEN 61386
✓	✓	-50°C to +350°C	✓						BSEN 61386
✓		-50°C to +130°C				✓	✓	✓	BSEN 61386
✓		-25°C to +90°C				✓	✓	✓	BSEN 61386

FLB - General Flexible PVC



Certification & Characteristics

Certification Standard:

BSEN 61386

Static Temp: -25°C to +105°C

Flexing Temp: -5°C to +105°C

Special Characteristics:

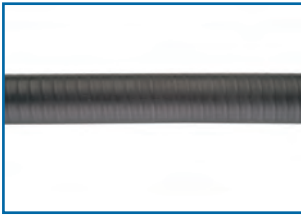
Flame retardant PVC covering

Oil resistant

Flame Propagation:

Flame dies in less than 30 seconds after ignition source is removed

FLT - Limited Fire Hazard Flexible



Certification & Characteristics

Certification Standard:

LUL Fully Compliant,
MOD to NES 518: Issue 3
DEF STAN 61-12 (Part 31)
Issue 1, BSEN 61386

Static Temp: -25°C to +90°C

Flexing Temp: -5°C to +90°C

Special Characteristics:

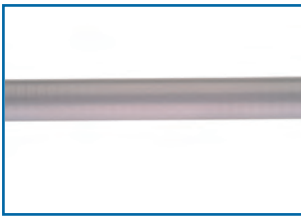
Low smoke, zero halogen

NF F16-101 I3 F1

Flame Propagation:

Flame dies in less than 30 seconds after ignition source is removed

FUB-UK / CSA



Certification & Characteristics

Certification Standard:

UL, CSA,
UL File number E76358

Static Temp: -25°C to +105°C

Flexing Temp: -5°C to +105°C

UL Rating: -10°C to +60°C

CSA Rating: -10°C to +75°C

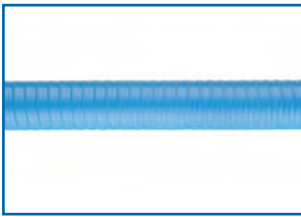
Special Characteristics:

Flame retardant PVC covering

Flame Propagation:

Flame dies in less than 60 seconds after 3 applications, and ignition source is removed

FLH - High Temperature



Certification & Characteristics

Certification Standard:

BSEN 61386

Static Temp: -50°C to +130°C

Flexing Temp: -5°C to +130°C

Special Characteristics:

Flame resistance:

UL94 V2

Chemical and oil resistant

Flame Propagation:

Flame dies in less than 30 seconds after ignition source is removed

Liquid Tight Flexible Metallic Conduit System

Technical Specifications

British Conduit Size (mm)	12	16	20	25	32	40	50	63
US Trade Size (inches)	$\frac{5}{16}$	$\frac{3}{8}$	$\frac{1}{2}$	$\frac{3}{4}$	1	$1\frac{1}{4}$	$1\frac{1}{2}$	2
Inside Diameter (mm)	10.0	12.5	16.0	21.0	26.0	34.8	40.4	51.6
Coil Lengths (m)	10/30	10/30	10/30	10/30	10/20	10/20	10/20	10/20
Black	FLB02*	FLB03*	FLB04*	FLB05*	FLB06*	FLB07*	FLB08*	FLB09*
Grey	-	FLG03*	FLG04*	FLG05*	FLG06*	FLG07*	FLG08*	FLG09*

*Add coil length to complete part number e.g. 10 metres of LT-PVC 10mm in black is FLB0410

British Conduit Size (mm)	12	16	20	25	32	40	50	63
US Trade Size (inches)	$\frac{5}{16}$	$\frac{3}{8}$	$\frac{1}{2}$	$\frac{3}{4}$	1	$1\frac{1}{4}$	$1\frac{1}{2}$	2
Inside Diameter (mm)	10.0	12.5	16.0	21.0	26.0	34.8	40.4	51.6
Coil Lengths (m)	10/30	10/30	10/30	10/30	10/20	10/20	10/20	10/20
Black	-	FLT03*	FLT04*	FLT05*	FLT06*	FLT07*	FLT08*	FLT09*

*Add coil length to complete part number e.g. 10 metres of LT-PVC 10mm in black is FLB0410

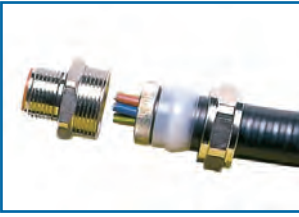
British Conduit Size (mm)	12	16	20	25	32	40	50	63
US Trade Size (inches)	$\frac{5}{16}$	$\frac{3}{8}$	$\frac{1}{2}$	$\frac{3}{4}$	1	$1\frac{1}{4}$	$1\frac{1}{2}$	2
Inside Diameter (mm)	10.0	12.5	16.0	21.0	26.0	34.8	40.4	51.6
Coil Lengths (m)	10/30	10/30	10/30	10/30	10/20	10/20	10/20	10/20
Black	-	FUB03*	FUB04*	FUB05*	FUB06*	FUB07*	FUB08*	FUB09*
Grey	-	FUG03*	FUG04*	FUG05*	FUG06*	FUG07*	FUG08*	FUG09*

*Add coil length to complete part number e.g. 10 metres of LT-PVC 10mm in black is FLB0410

British Conduit Size (mm)	12	16	20	25	32	40	50	63
US Trade Size (inches)	$\frac{5}{16}$	$\frac{3}{8}$	$\frac{1}{2}$	$\frac{3}{4}$	1	$1\frac{1}{4}$	$1\frac{1}{2}$	2
Inside Diameter (mm)	10.0	12.5	16.0	21.0	26.0	34.8	40.4	51.6
Coil Lengths (m)	10/30	10/30	10/30	10/30	10/20	10/20	10/20	10/20
Black	-	FLH03*	FLH04*	FLH05*	FLH06*	FLH07*	FLH08*	FLH09*
Blue	-	FLLH03*	FLLH04*	FLLH05*	FLLH06*	FLLH07*	-	-

*Add coil length to complete part number e.g. 10 metres of LT-PVC 10mm in black is FLB0410

KF-F Straight - Liquid Tight



Certification & Characteristics

Certification Standard:

UL514B,
UL file number E60625

IP Rating:

IP66 & 67 & 68
5 Bar 30 mins

Suitable Conduits:

LT-PVC
LT-T
UL/CSA
LT-H

Connector Description:

Straight male, brass/nickel plated

KF-F 45° - Liquid Tight



Certification & Characteristics

Certification Standard:

UL

IP Rating:

IP66 & 67

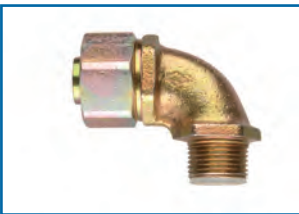
Suitable Conduits:

LT-PVC
LT-T
UL/CSA
LT-H

Connector Description:

45° male elbow, steel and malleable iron/zinc plated

KF-F 90° - Liquid Tight



Certification & Characteristics

Certification Standard:

UL

IP Rating:

IP66 & 67

Suitable Conduits:

LT-PVC
LT-T
UL/CSA
LT-H

Connector Description:

90° male elbow, steel and malleable iron/zinc plated

KF-C Straight



Certification & Characteristics

IP Rating:

IP66 & 67

Suitable Conduits:

LT-PVC
LT-T
UL/CSA
LT-H

Connector Description:

Straight male, black PVC sleeve, steel/zinc body

Liquid Tight Flexible Metallic Conduit System

Technical Specifications

British Conduit Size (mm)	12	16	16	20	25	32	40	50	63
US Trade Size (inches)	$\frac{5}{16}$	$\frac{3}{8}$	$\frac{3}{8}$	$\frac{1}{2}$	$\frac{3}{4}$	1	$1\frac{1}{4}$	$1\frac{1}{2}$	2
Pack Quantity	25	25	25	25	10	5	5	2	1
Thread Size - Metric (mm)	16	16	20	20	25	32	40	50	63
Ordering Code	XQM0203	XQM0303	XQM0304	XQM0404	XQM0505	XQM0606	XQM0707	XQM0808	XQM0909
Thread Size - PG	9	11	13.5	16	21	29	36	42	48
Ordering Code	XQP0202	XQP0303	XQP0304	XQP0405	XQP0506	XQP0607	XQP0708	XQP0809	XQP0910
Thread Size - NPT (in.)	-	-	$\frac{1}{2}$	$\frac{1}{2}$	$\frac{3}{4}$	1	$1\frac{1}{4}$	$1\frac{1}{2}$	2
Ordering Code	-	-	XQA0304	XQA0404	XQA0505	XQA0606	XQA0707	XQA0808	XQA0909

Technical Specifications

British Conduit Size (mm)	12	16	16	20	25	32	40	50	63
US Trade Size (inches)	$\frac{5}{16}$	$\frac{3}{8}$	$\frac{3}{8}$	$\frac{1}{2}$	$\frac{3}{4}$	1	$1\frac{1}{4}$	$1\frac{1}{2}$	2
Pack Quantity	-	10	10	10	10	5	5	2	1
Thread Size - Metric (mm)	-	16	20	20	25	32	40	50	63
Ordering Code	-	XRM0303	XRM0304	XRM0404	XRM0505	XRM0606	XRM0707	XRM0808	XRM0909

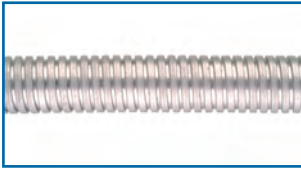
Technical Specifications

British Conduit Size (mm)	12	16	16	20	25	32	40	50	63
US Trade Size (inches)	$\frac{5}{16}$	$\frac{3}{8}$	$\frac{3}{8}$	$\frac{1}{2}$	$\frac{3}{4}$	1	$1\frac{1}{4}$	$1\frac{1}{2}$	2
Pack Quantity	-	10	10	10	10	5	5	2	1
Thread Size - Metric (mm)	-	16	20	20	25	32	40	50	63
Ordering Code	-	XSM0303	XSM0304	XSM0404	XSM0505	XSM0606	XSM0707	XSM0808	XSM0909
Thread Size - NPT (in.)	-	-	$\frac{1}{2}$	$\frac{1}{2}$	$\frac{3}{4}$	1	$1\frac{1}{4}$	$1\frac{1}{2}$	2
Ordering Code	-	-	XSA0304	XSA0404	XSA0505	XSA0606	XSA0707	XSA0808	XSA0909

Technical Specifications

British Conduit Size (mm)	12	16	16	20	25	32	40	50	63
US Trade Size (inches)	$\frac{5}{16}$	$\frac{3}{8}$	$\frac{3}{8}$	$\frac{1}{2}$	$\frac{3}{4}$	1	$1\frac{1}{4}$	$1\frac{1}{2}$	2
Pack Quantity	-	25	25	25	10	5	5	2	1
Thread Size - Metric (mm)	-	16	-	20	25	32	40	50	63
Ordering Code	-	XMM0303	-	XMM0404	XMM0505	XMM0606	XMM0707	XMM0808	XMM0909

KEU - Galvanised Steel



Certification & Characteristics

Certification Standard:
BSEN 61386

Temperature:
-50°C to +300°C

Flame Propagation:
Contains no flame propagating materials

KEBF - PVC Covered Steel



Certification & Characteristics

Certification Standard:
BSEN 61386
Static Temp: -25°C to +70°C

Flexing Temp: -5°C to +70°C
Special Characteristics:
Flame retardant PVC covering

Flame Propagation:
Flame dies in less than 30 seconds

KEBT - Covered Steel



Certification & Characteristics

Certification Standard:
LUL Fully Compliant, for fixed locations and rolling stock
BSEN 61386

Static Temp: -25°C to +90°C
Flexing Temp: -5°C to +90°C
Special Characteristics:
Low smoke, zero halogen

NF F16-101 I3 F1
Flame Propagation:
Flame dies in less than 30 seconds

Fixed - For uncovered conduit



Certification & Characteristics

Special Characteristics:
Can be zinc/nickel plated or brass/nickel plated

IP Rating & Suitable Conduits:
KEU - IP40

Connector Description:
Fixed straight male Metallic

Fixed - For covered conduit



Certification & Characteristics

Special Characteristics:
Can be zinc/nickel plated or brass/nickel plated

IP Rating & Suitable Conduits:
KEBF & KEBT - IP54

Connector Description:
Fixed straight male Metallic

Swivel - For covered conduit



Certification & Characteristics

IP Rating:
IP54

Suitable Conduits:
KEBF & KEBT

Connector Description:
Swivel straight male Metallic

Water-Tight - For covered conduit



Certification & Characteristics

IP Rating:
IP65

Suitable Conduits:
KEBF
KEBT

Connector Description:
Fixed straight male.
Brass / nickel plated.

KE Ultra Flexible Metallic Conduit System

Technical Specifications

British Conduit Size (mm)	10	12	16	20	25	32	40	50
Inside Diameter (mm)	7.0	10.0	12.9	17.0	21.1	28.4	36.4	48.2
Coil Lengths (m)	10/30	10/30	10/30	10/30/50	10/30/50	10/20	10/20	10/20
Self Colour	KEU01*	KEU02*	KEU03*	KEU04*	KEU05*	KEU06*	KEU07*	KEU08*

*Add coil length to complete part number e.g. 10 metres of KEU 10mm = KEU0110. ¹denotes standard PVC covering

British Conduit Size (mm)	10	12	16	20	25	32	40	50
Inside Diameter (mm)	7.0	10.0	12.9	17.0	21.1	28.4	36.4	48.2
Coil Lengths (m)	10/30	10/30	10/30	10/30/50	10/30/50	10/20	10/20	10/20
Black	KEBF01*	KEBF02*	KEBF03*	KEBF04*	KEBF05*	KEBF06*	KEBF07*	KEB08* ¹

*Add coil length to complete part number e.g. 10 metres of KEU 10mm = KEU0110. ¹denotes standard PVC covering

British Conduit Size (mm)	10	12	16	20	25	32	40	50
Inside Diameter (mm)	7.0	10.0	12.9	17.0	21.1	28.4	36.4	48.2
Coil Lengths (m)	-	-	10/30	10/30	10/30	10/20	10/20	-
Black	-	-	KEBT03*	KEBT04*	KEBT05*	KEBT06*	KEBT07*	-

*Add coil length to complete part number e.g. 10 metres of KEU 10mm = KEU0110. ¹denotes standard PVC covering

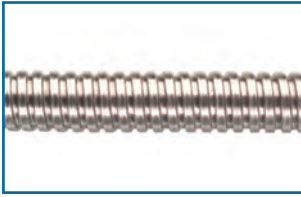
British Conduit Size (mm)	10	12	16	16	20	25	32	40	50
Pack Quantity	25	25	25	25	25	10	5	5	2
Thread Size - Metric (mm)	-	-	16	20	20	25	32	40	50
Ordering Code	-	-	GFM0303	GFM0304	GFM0404	GFM0505	GFM0606	GFM0707	GFM0808

British Conduit Size (mm)	10	12	16	16	20	25	32	40	50
Pack Quantity	25	25	25	25	25	10	5	5	2
Thread Size - Metric (mm)	-	-	16	20	20	25	32	40	50
Ordering Code	-	-	GAM0303	GAM0304	GAM0404	GAM0505	GAM0606	GAM0707	GAM0808

British Conduit Size (mm)	10	12	16	16	20	25	32	40	50
Pack Quantity	25	25	25	25	25	10	5	5	2
Thread Size - Metric (mm)	-	-	16	-	20	25	32	40	50
Ordering Code	-	-	GBM0303	-	GBM0404	GBM0505	GBM0606	GBM0707	GBM0808

British Conduit Size (mm)	16	20	25	32	40
Pack Quantity	25	25	10	5	5
Thread Size - Metric (mm)	16mm	20mm	25mm	32mm	40mm
Ordering Code	GQM0303	GQM0404	GQM0505	GQM0606	GQM0707

KSU - Uncovered Flexible 316 Stainless Steel Conduit



Certification & Characteristics

Certification Standard:
IEC61386

Temperature:
-50°C to +350°C

Flame Propagation:
Contains no flame propagating materials

FSH Stainless - Covered Flexible 316 Stainless Steel Conduit



Certification & Characteristics

Certification Standard:
IEC61386
Static Temp: -50°C to +130°C
Flexing Temp: -5°C to +130°C

Special Characteristics:
Chemical and oil resistant
Jacket

Flame Propagation:
Flame dies in less than 30 seconds after ignition source removed.

FST Stainless - Covered Flexible 316 Stainless Steel Conduit



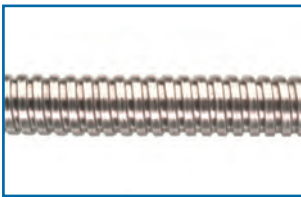
Certification & Characteristics

Certification Standard:
IEC61386
LUL Fully Compliant
Static Temp: -25°C to +90°C

Flexing Temp: -5°C to +90°C
Special Characteristics:
Low smoke, zero halogen
NF F16-101 I3 F1

Flame Propagation:
Flame dies in less than 30 seconds after ignition source removed.

KSU Small Bore - Uncovered Flexible 316 Stainless Steel Conduit



Certification & Characteristics

Temperature:
-50°C to +350°C

Flame Propagation:
Contains no flame propagating materials

Stainless - For uncovered Flexible 316 Stainless Steel Conduit



Certification & Characteristics

IP Rating:
IP40

Suitable Conduits:
KSU

Connector Description:
Fixed straight male, 316 stainless steel

Stainless - For Covered Flexible 316 Stainless Steel Conduit



Certification & Characteristics

IP Rating:
IP66 & 67

Suitable Conduits:
LT-H Stainless
LT-T Stainless

Connector Description:
Fixed straight male, 316 stainless steel with nylon seal and nickel plated ferrule

Stainless Steel Conduit System

Technical Specifications

British Conduit Size (mm)	10	12	16	20	25	32	40	50	63
US Trade Size (inches)	1/4	5/16	3/8	1/2	3/4	1	1 1/4	1 1/2	2
Inside Diameter (mm)	6.4	10.0	12.9	17.0	21.1	28.4	36.4	-	-
Coil Lengths (m)	10/30	10/30	10/30	10/30	10/30	10/20	10/20	10/20	10/20
Self Colour	KSU01*	KSU02*	KSU03*	KSU04*	KSU05*	KSU06*	KSU07*	-	-

*Add coil length to complete part number e.g. 10 metres of KSU 10mm is KSU0110

British Conduit Size (mm)	10	12	16	20	25	32	40	50	63
US Trade Size (inches)	1/4	5/16	3/8	1/2	3/4	1	1 1/4	1 1/2	2
Inside Diameter (mm)	-	-	12.5	16.0	21.0	26.0	34.8	40.4	51.6
Coil Lengths (m)	10/30	10/30	10/30	10/30	10/30	10/20	10/20	10/20	10/20
Black	-	-	FSH03*	FSH04*	FSH05*	FSH06*	FSH07*	FSH08*	FSH09*

*Add coil length to complete part number e.g. 10 metres of KSU 10mm is KSU0110

British Conduit Size (mm)	10	12	16	20	25	32	40	50	63
US Trade Size (inches)	1/4	5/16	3/8	1/2	3/4	1	1 1/4	1 1/2	2
Inside Diameter (mm)	-	-	12.5	16.0	21.0	26.0	34.8	40.4	51.6
Coil Lengths (m)	10/30	10/30	10/30	10/30	10/30	10/20	10/20	10/20	10/20
Black	-	-	FST03*	FST04*	FST05*	FST06*	FST07*	FST08*	FST09*

*Add coil length to complete part number e.g. 10 metres of KSU 10mm is KSU0110

British Conduit Size (mm)	10	12	16						
US Trade Size (inches)	1/4	5/16	3/8						
Inside Diameter (mm)	3.0	5.0	8.0						
Coil Lengths (m)	20	20	10						
Self Colour	KSU00320	KSU00520	KSU00810						

*Add coil length to complete part number e.g. 10 metres of KSU 10mm is KSU0110

British Conduit Size (mm)	10	12	16	20	25	32	40		
Pack Quantity	1	1	1	1	1	1	1		
Thread Size - Metric (mm)	-	-	16	20	25	32	40		
Ordering Code	-	-	GFMS0303	GFMS0404	GFMS0505	GFMS0606	GFMS0707		
Thread Size - PG	7	9	-	-	-	-	-		
Ordering Code	GFPS0101	GFPS0202	-	-	-	-	-		

British Conduit Size (mm)		16	16	20	25	32	40	50	63
US Trade Size (inches)		3/8	3/8	1/2	3/4	1	1 1/4	1 1/2	2
Pack Quantity		1	1	1	1	1	1	1	1
Thread Size - Metric (mm)		16	20	20	25	32	40	50	63
Ordering Code		XQMS0303	XQMS0304	XQMS0404	XQMS0505	XQMS0606	XQMS0707	XQMS0808	XQMS0909
Thread Size - NPT (in.)		-	1/2	1/2	3/4	1	1 1/4	1 1/2	2
Ordering Code		-	XQAS0304	XQAS0404	XQAS0505	XQAS0606	XQAS0707	XQAS0808	XQAS0909

Metric Locknuts, Lockrings and Washers

Type

Hex Locknut



Material

Thread Type - Metric

Stainless Steel

Dimension Across Flats (mm)
Thickness (mm)

Nickel plated brass

Dimension Across Flats (mm)
Thickness (mm)

Steel

Dimension Across Flats (mm)
Thickness (mm)

Other Electrical Products & Accessories

Colour	16	20	25	32	40	50	63
SELF	20.0 3.0 MXWH03	28.0 3.5 MXWH04	28.0 4.0 MXWH05	38.0 5.0 MXWH06	50.0 4.5 MXWH07	66.0 7.0 MXWH08	70.0 7.5 MXWH09
NICKEL	22.0 3.0 WHMM03	24.0 3.5 WHMM04	30.0 3.5 WHMM05	35.0 4.5 WHMM06	44.0 4.5 WHMM07	55.0 7.0 WHMM08	70.0 7.5 WHMM09
SELF	23.2 3.5 WHMS03	27.9 3.5 WHMS04	34.5 3.5 WHMS05	43.0 3.5 WHMS06	49.5 4.0 WHMS07	63.1 4.0 WHMS08	- - -



From our UK based facility Kopex International manufactures a wide range of worldwide approved products including metallic and non metallic conduit and fittings along with a full range of conduit accessories and non metallic cable glands. Kopex is committed to an extensive and on going R&D programme, which will continue to deliver innovative and high performance products for safety critical areas.

Kopex International
UK Head Office

Station Road, Coleshill,
Birmingham, B46 1HT
T +44 (0) 1675 468 217
F +44 (0) 1675 468 280
I www.kopex.co.uk

The content of the Thomas & Betts catalogue has been carefully checked for accuracy at the time of print. However, Thomas & Betts doesn't give any warranty of any kind, express or implied, in this respect and shall not be liable for any loss or damage that may result from any use or as a consequence of any inaccuracies in or any omissions from the information which it may contain.

Copyright Thomas & Betts 2006. Copyright in these pages is owned by Thomas & Betts except where otherwise indicated. No part of this publication may be reproduced, copied or transmitted in any form or by any means, without our prior written permission. Images, trade marks, brands, designs and technology are also protected by other intellectual property rights and may not be reproduced or appropriated in any manner without written permission of their respective owners. Thomas & Betts reserves the right to change and improve any product specifications or other mentions in the catalogue at its own discretion and at any time. These conditions of use are governed by the laws of the Netherlands and the courts of Amsterdam shall have exclusive jurisdiction in any dispute.

Thomas & Betts
A Member of the ABB Group